



COACHING IRELAND™

OILIÚINT ÉIREANN



COACHING IRELAND™

OILIÚINT ÉIREANN



COACHING IRELAND™

OILIÚINT ÉIREANN



COACHING IRELAND™

OILIÚINT ÉIREANN



COACHING IRELAND™

OILIÚINT ÉIREANN

TDC 25 Weekend Two

– 15th/16th November 2008



Welcome
Back!

Hayley Harrison

Timetable:

Saturday, Nov 15th 2008

10:00	Registration Tea/Coffee
10.15	Adult Learning Principles/Role of Tutor revisited
11.30	LTPAD – implications for Coach Education (Fiona Larkin, Coaching Ireland)
1.00	Lunch
2.00	Demonstration of Field Based presentation (Susanne Macken)
4.00	Review of Field Based Presentation
5.00	Close

Sunday, Nov 16th 2008

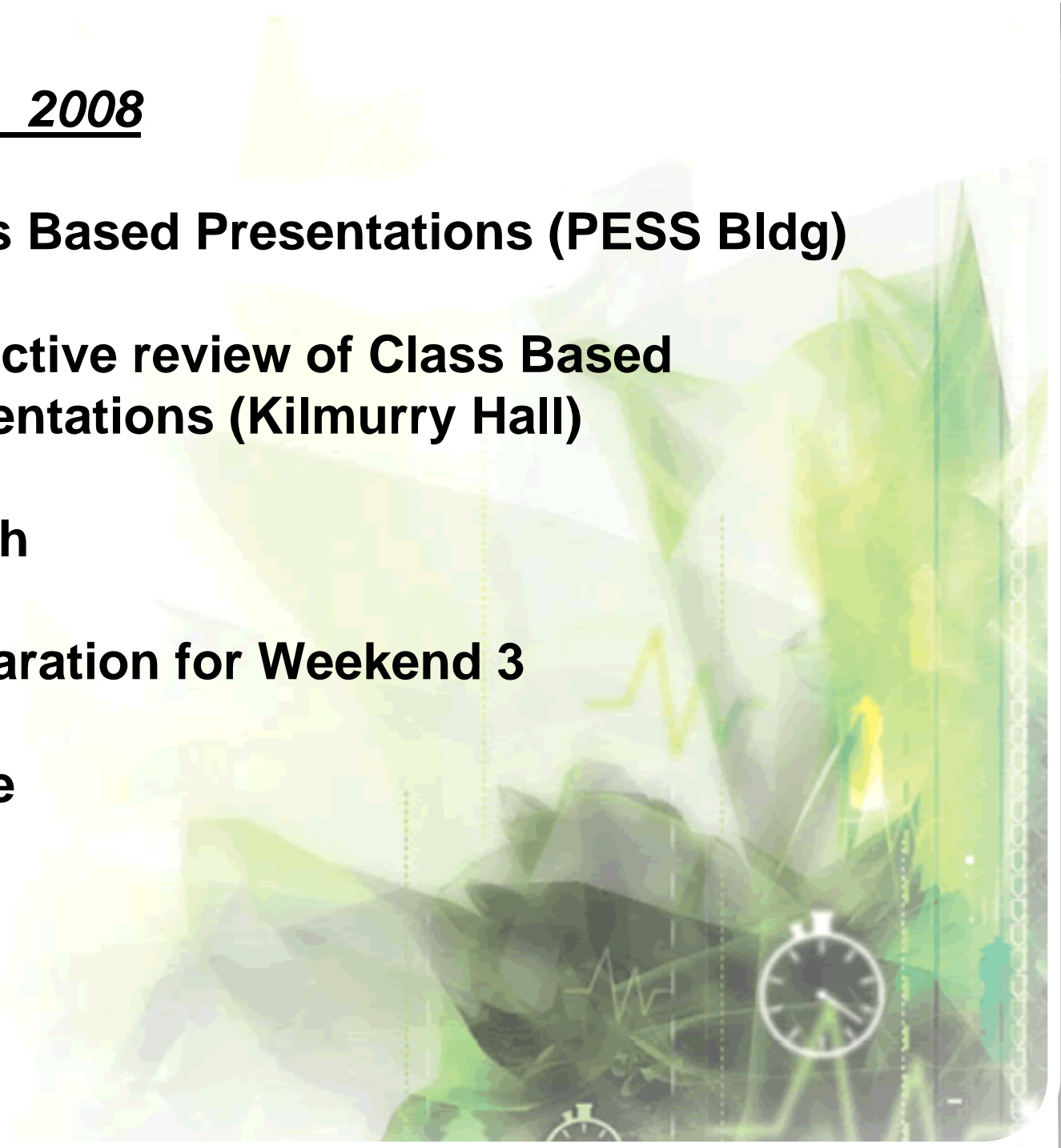
9.30 Class Based Presentations (PESS Bldg)

12:30 Collective review of Class Based Presentations (Kilmurry Hall)

1:30 Lunch

2:30 Preparation for Weekend 3

4:00 Close





What colour
are you?

Outcomes:

By the end of this weekend you will have:

- **Revisited some ‘weekend one’ topics**
- **Taken part in a session on LTPAD and its implications for Coach Education**
- **Observed & taken part in a ‘field based’ presentation**
- **Presented a ‘class based’ session and been ‘debriefed’**
- **Travelled a little further on the tutoring pathway!**

12000



ONE TUTOR COURSE



20 Tutors (running 2 courses per year, 20 coaches per course)

20 TUTORS DELIVERING TO 400 COACHES



Each coach coaches 30 people



400 x 30 = 12000
PLAYERS/participants



What is a tutor?

A tutor is...



Different types of learners:



Activist

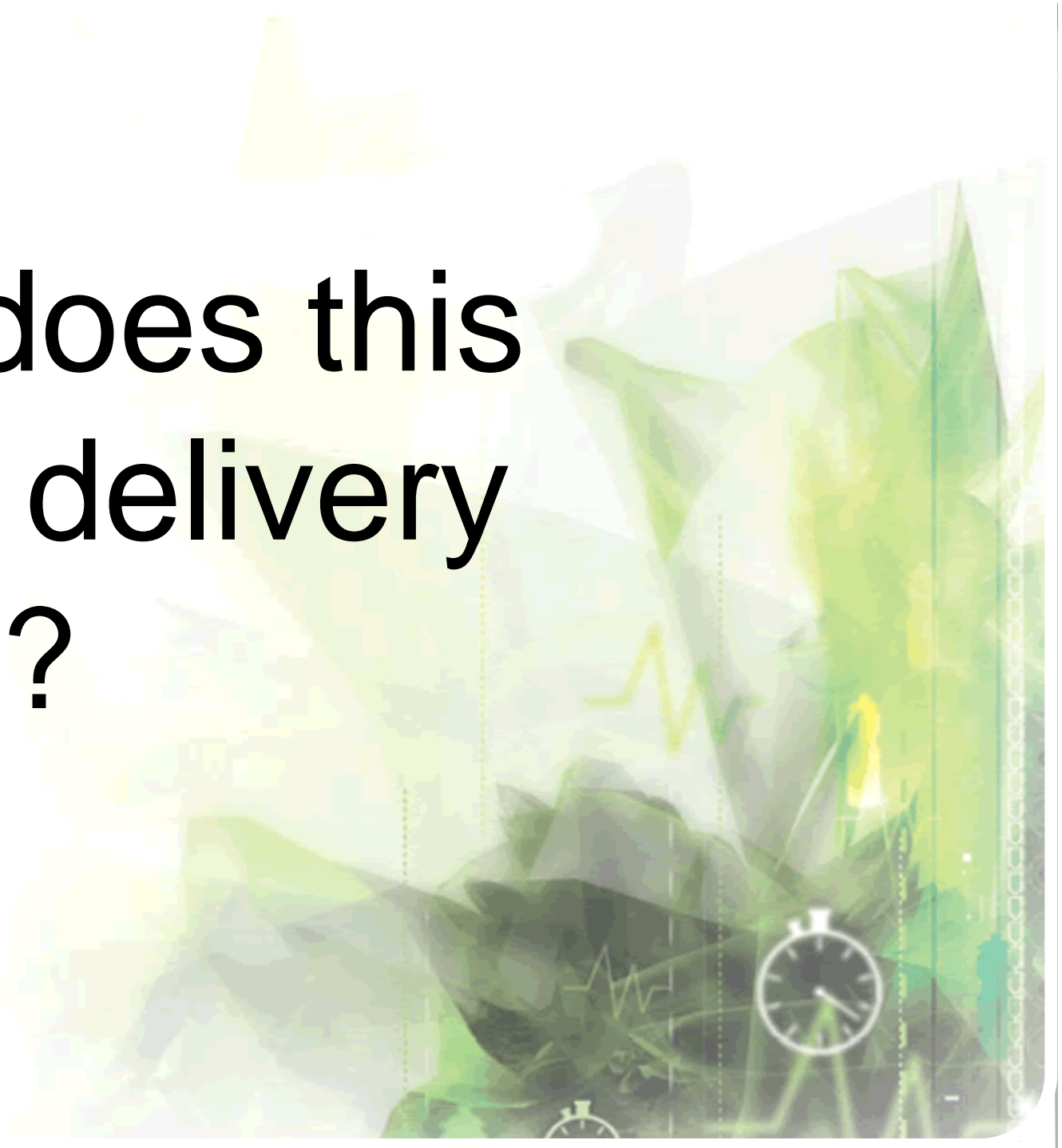
Reflector

Theorist

Pragmatist

may
may not
Strengths
Weaknesses

**How does this
affect delivery
styles?**

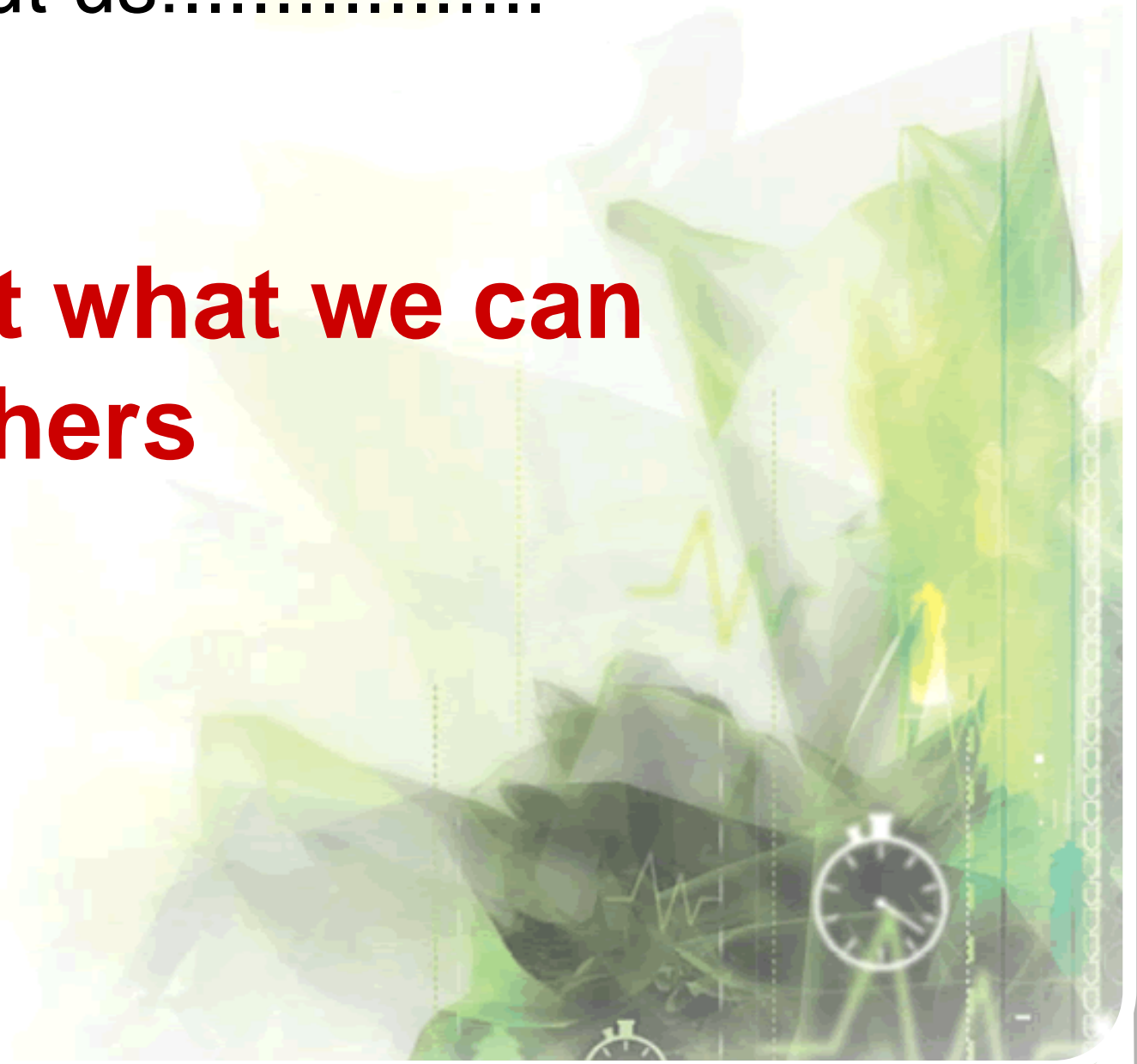


What does this clip have to do with us as tutors?



It's not about us!.....

**It's about what we can
do for others**



Everyone's different...

And because everyone is different and people learn differently, we have to try and cater for as many different people in as many different ways as we can, BUT it's not easy!

